

Corrective Action Management System (CAMS)

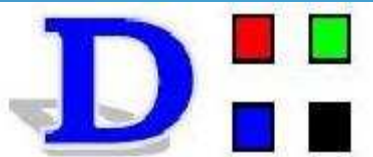
Datarizer Inc.

Lesley Baloyi

www.datarizer.co.za

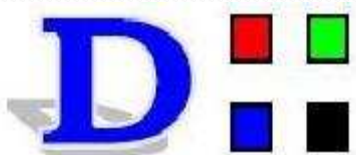
Lesley.baloyi@datarizer.co.za

It is all about Data and Interface Management



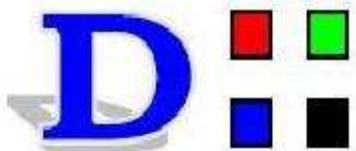
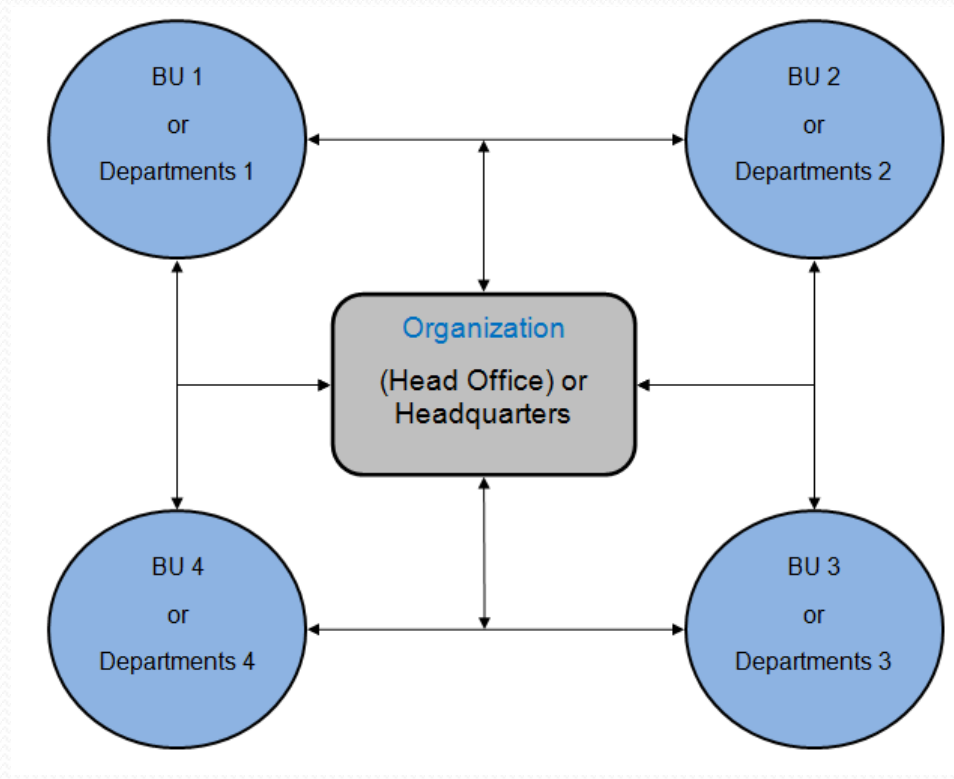
CAMS Architecture

- Corrective Action Management System is designed to work on a global level across the internet.
- It enables organizations with multiple Business Units to manage assignments, tasks or actions.
- It is multi-user platform.
- Backed up by 2nd best Database in the world – MySQL. Oracle database is another option.
- Developed using C# language.
- Internet is the only requirement to connect to the system.



CAMS Architecture

- CAMS is based on the Organizational structure shown on the RHS.
- All departments, BU's will have access to real time information disregarding their location globally.
- Every company or organization need this application to manage actions, task etc.



Action Process

- **Responsible Person (RP)**
 - A person who is responsible to carry out the Action/Task or assignment.
- **CloseOut Manager**
 - Any person with some interest, who has adequate knowledge to verify, check and confirm that the Action/Task or assignment was carried out as requested.

